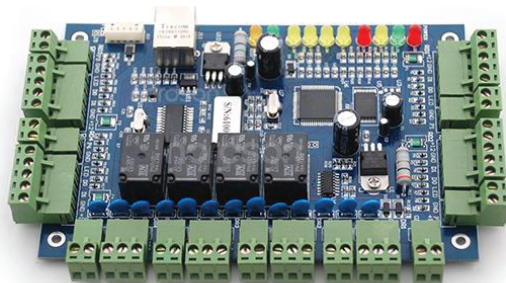




Access Control Systems



DATA SHEET

+44 20 7193 3422
info@webbinfra.com
www.webbinfra.com



Network Access Controller

Webb's Network Access Controller is a perfect solution designed to provide secure and seamless access to various areas of the facility. It offers Wiegand reader communication compatibility and remote management, making it an ideal choice for hassle free access control integration.

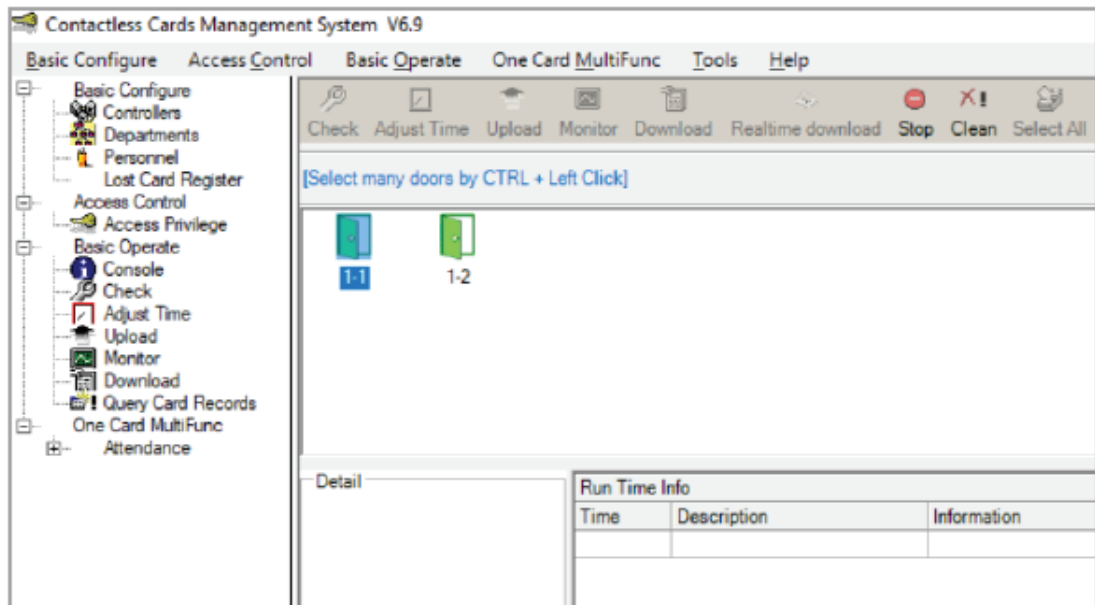
Features

- Available in two models: T.MDC.ACS.DAC.02 and T.MDC.ACS.DAC.04
- Large-capacity flash memory with storage data of up to 10 years
- Multiple identification methods to open the door
- Supports remote operation of door management with ACS software
- Auto-discovery within LAN Network from software panel
- Supports individual unique settings for each card
- Supports multi-user multi-units management and monitoring in real-time

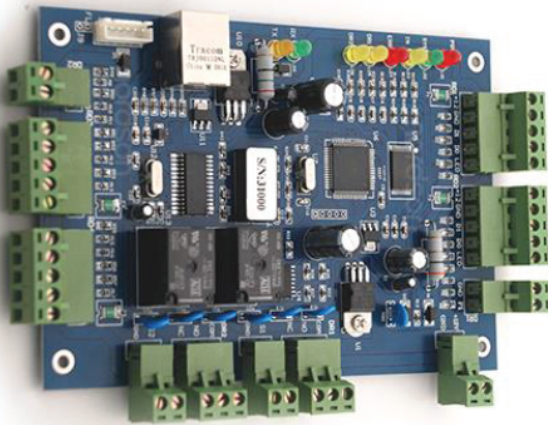
Technical specifications

- Communication: TCP/IP 10M/100M adaptive
- Power supply: 12VDC 4-7A
- Power consumption: Less than 100mA
- Reader format: Wiegand 26
- Quantity of readers/ Door controlled (T.MDC.ACS.DAC.02): 2 pairs
- Quantity of readers/ Door controlled (T.MDC.ACS.DAC.04): 4 pairs
- Door opening time extending setting: 1-600 seconds(adjustable)
- Operating temperature: - 40°C to +70°C
- Operating humidity: 10-90%RH
- No of users: 20,000 Users
- No of event buffers (offline): 100,000 event buffers
- Dimensions: 160mm x 106mm x 65mm

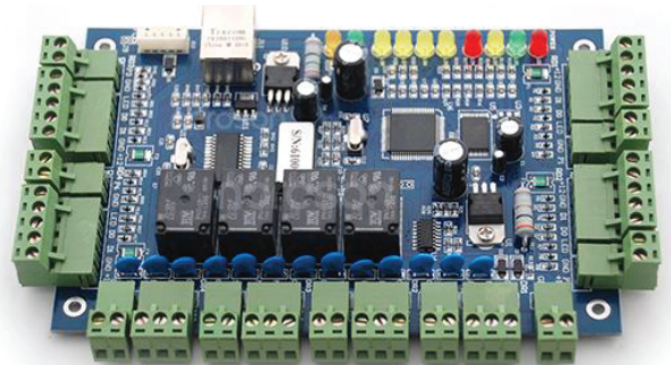
**Specifications are subject to change without notice based on technical recommendations and related product enhancements*



Remote door management operation software



T.MDC.ACS.DAC.02



T.MDC.ACS.DAC.04

**Specifications are subject to change without notice based on technical recommendations and related product enhancements*

3-Step Access Control Reader

Webb's range of Access Control Readers are versatile and offer comprehensive solutions for various access control systems. Designed for superior security and ease of access, these readers are engineered to provide a wide range of authentication methods and are suitable for diverse applications.

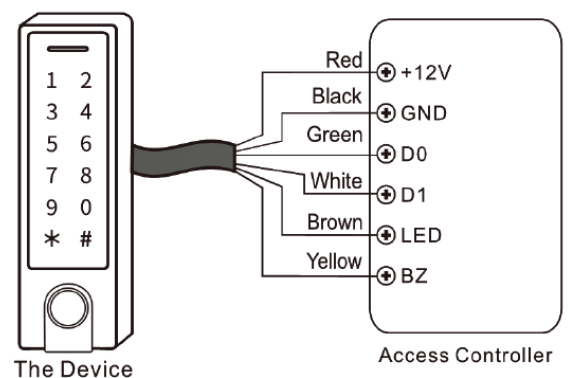
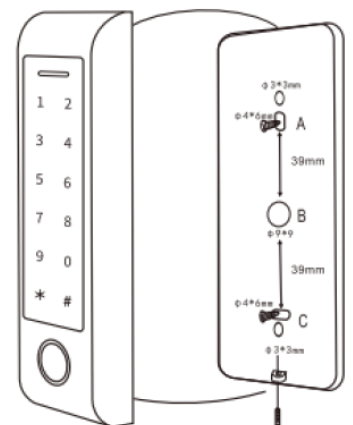
Features

- Part number: T.MDC.ACS.AR.FRP.66
- IP66 waterproof capacitive fingerprint sensor with touch keypad
- Sturdy metal casing for anti-theft protection
- Supports up to 1000 users
- Can function as a standard Wiegand reader
- Suitable for EM and EM + Mifare card types
- Integrated with LDR (light dependent resistor) for anti-tampering
- Consists of a back-lit keypad, with auto-shut off after 20 seconds



Technical specifications

- IP Rating: IP66 waterproof
- Authentication type: Fingerprint / PIN / Card
- User capacity: 1000
- User type: 100 fingerprints + 888 cards/PIN, 2 panic users
- Card type: 125kHz EM / 125kHz EM + 13.56MHz Mifare
- Display: Tri-color LED status display
- Communication: Wiegand, optional with bluetooth or WiFi
- Metal material: Zinc alloy
- Power supply: 12-18VDC
- Verification speed: <0.5 sec
- Operating temperature: -30°C to +60°C
- Operating humidity: 0% to 98%
- Gross weight: 0.42kg
- Dimensions: 44mm x 165mm x 22mm (w x h x d)



**Specifications are subject to change without notice based on technical recommendations and related product enhancements*

IP50 3-Step Access Control Reader

Webb's 3-step IP50 access control reader offers high quality performance for access control systems and is integrated with pin, fingerprint and ID card authentication to help secure your critical assets easily.

Features

- Part number: T.MDC.ACS.AR.FRP.ND
- Less than 1.5 seconds finger recognition speed
- Audio-visual indicator for authentication acceptance
- Relay outputs for electric locks and alarms
- Supports SD card data storage
- Optional Mifare card reader supporting dual factor authentication

Technical specifications

- IP rating: IP50
- Finger print capacity: 500
- ID card capacity: 500
- Recording capacity: 500
- Communication: USB-host
- Optional functions: Mifare card
- Access control interface: 3rd party electric lock, Door sensor, Exit button
- Authentication: Finger / PIN / Card
- Power supply: DC 12v
- Verification speed: <0.5 sec
- Operating temperature: 0°C to +45°C
- Operating humidity: 20% to 80%
- Gross weight: 0.25kg
- Dimensions: 61mm x 151mm x 31mm (w x h x d)



**Specifications are subject to change without notice based on technical recommendations and related product enhancements*

IP65 3-Step Access Control Reader

Webb's IP65 rated access control reader is designed to be used for outdoor applications. It is reliable, durable and consists of highly accurate pin, RFID and fingerprint sensors.

It additionally enables seamless integration of the access control system with the interfaces of third-party electric locking systems or alarms.

Features

- Part number: T.MDC.ACS.AR.FRP.65
- Waterproof IP65 rating
- Equipped with full access control anti-passback
- Less than 1.5 seconds finger recognition speed
- Audio-visual indicator for authentication acceptance
- Relay outputs for electric locks and alarms
- Supports SD card data storage
- Optional Mifare card reader supporting dual factor authentication

Technical specifications

- IP rating: IP65
- Finger print capacity: 3000
- ID card capacity: 10000 EM(125 KHz)
- Recording capacity: 50000
- LCD: 128 x 64 OLED with white colour
- Communication: TCP/IP, RS232/485,USB-Host
- Optional functions: Mifare(optional)
- Access control interface: 3rd party electric lock, Door sensor, Exit button
- Authentications: Finger / PIN / Card
- Power supply: DC 12V
- Verification speed: ≤0.5 sec
- Operating temperature: -40°C to +50°C
- Operating humidity: 20% to 80%
- Gross weight: 1.5kg
- Dimensions: 62.5mm x 185mm x 41.5mm (w x h x d)



**Specifications are subject to change without notice based on technical recommendations and related product enhancements*

IP55 RFID Smart Lock

Webb's IP55 smart lock combines advanced security features with convenient access control methods. Equipped with RFID technology, mechanical key override, and remote access control, this smart lock provides a comprehensive security solution for any application.

Features

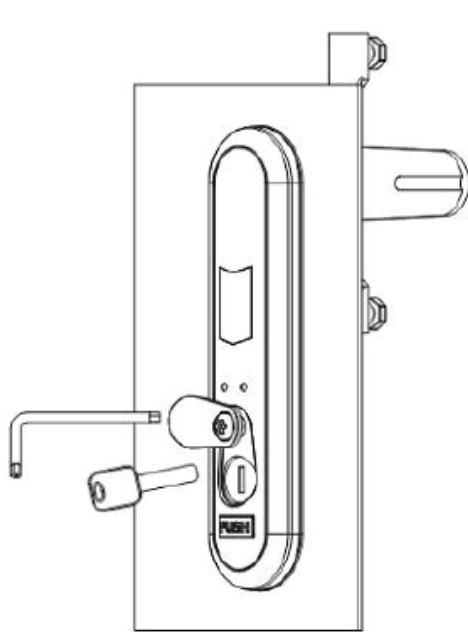
- Part number: T.MDC.ACS.AR.RMD.ND
- IP55 rated
- Consists of RFID, mechanical key override, and remote access control
- Easy installation and integration with an existing rack system
- Supports Wiegand protocol integration
- Material: zinc alloy and stainless steel

Technical specifications

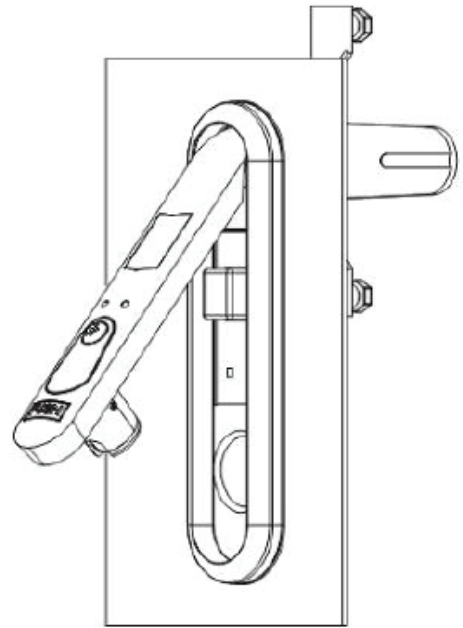
- IP rating: IP55
- Material: Zinc alloy body, stainless steel, electronic ABS
- Lock opening: RFID, Wiegand, mechanical key
- Communication: Wiegand protocol
- Optional functions: Door sensor
- Power supply: DC 10.8V - 13.2V
- Verification speed: ≤ 0.5 sec
- Operating temperature: -40°C to $+55^{\circ}\text{C}$
- Operating humidity: 20% to 90%
- Gross weight: 0.9kg
- Dimensions: 42mm x 170mm x 60mm (w x h x d)



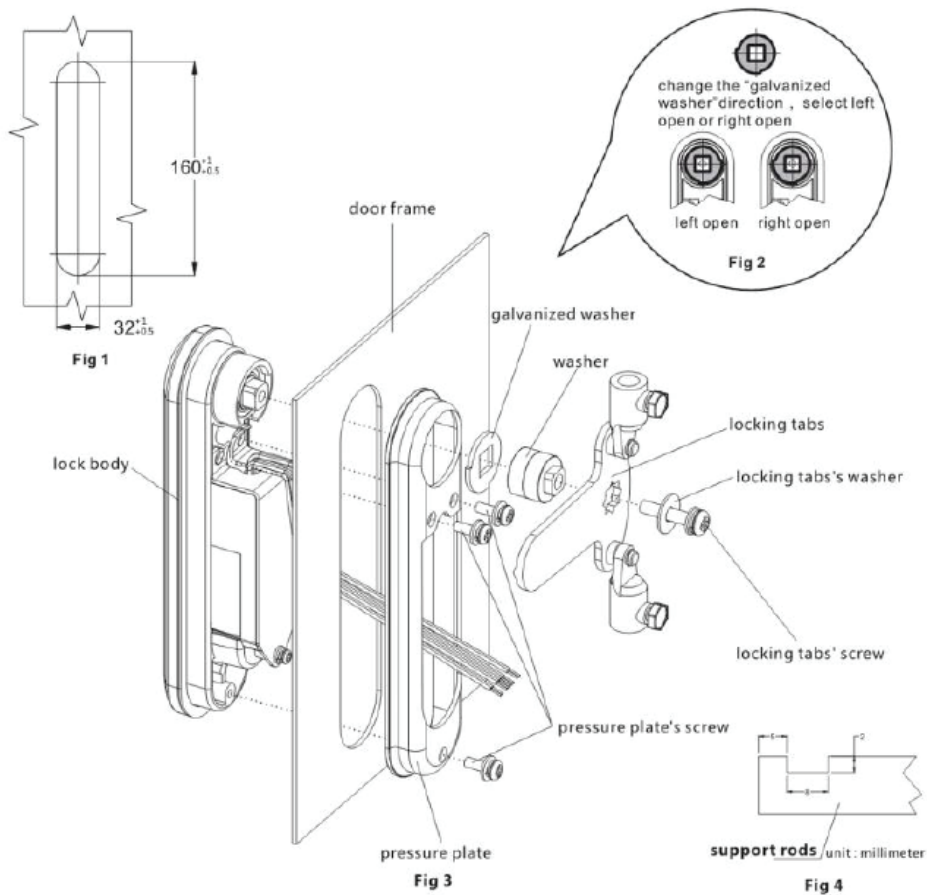
**Specifications are subject to change without notice based on technical recommendations and related product enhancements*



Key open lock



Electronic control lock



*Specifications are subject to change without notice based on technical recommendations and related product enhancements

IP40 RFID, PIN, Fingerprint Smart Lock

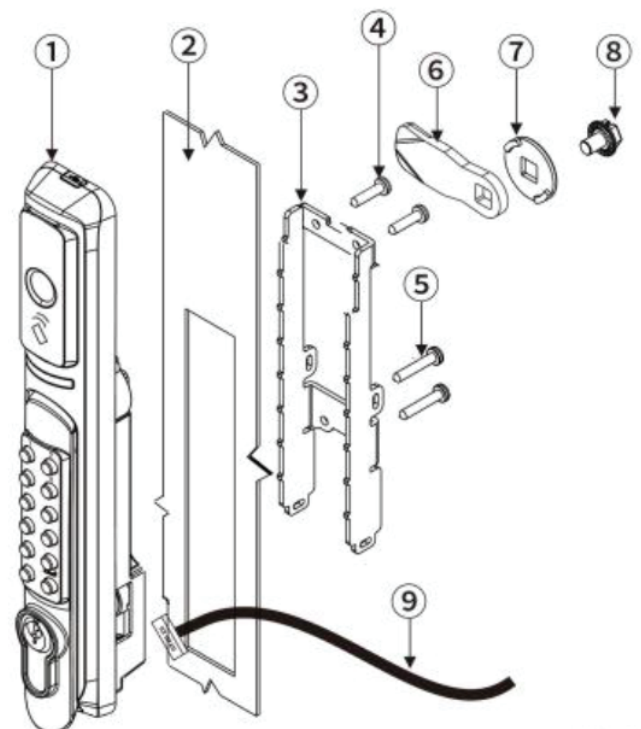
Webb's IP40 smart lock combines advanced security features with convenient access control methods. Equipped with RFID technology, digital code input, mechanical key override, and remote access control, this smart lock provides a comprehensive security solution for any application.

Features

- Part number: T.MDC.ACS.AR.FRPM.ND
- Consists of RFID, digital code input, mechanical key override, and Bluetooth for remote access control
- Hassle free installation and integration with existing rack systems
- Supports RS485 protocol and integration with existing DCIM systems
- Material: zinc alloy and stainless steel

Technical specifications

- IP rating: IP40
- Material: Zinc alloy body, stainless steel, electronic ABS
- Lock opening: RFID, PIN, Fingerprint, Remote, Key
- Communication: RS485
- Optional functions: Bluetooth
- Power supply: DC 10.8V - 13.2V
- Verification speed: ≤0.5 sec
- Operating temperature: -10°C to +70°C
- Operating humidity: 20% to 90%
- Gross weight: 0.5kg
- Dimensions: 20mm x 235mm x 37mm (w x h x d)



**Specifications are subject to change without notice based on technical recommendations and related product enhancements*

IP50, 4 in 1 Access Control Reader

Webb's IP50 4-in-1 Access Control Reader is designed to ensure security and convenience for your access control needs. Encased in a sturdy metal housing, this reader offers durability and reliability in any environment. Supports fingerprint, PIN, card, and facial recognition for access.

Features

- Part number: T.MDC.ACS.AR.FRPC.ND
- Features a metal casing that is sturdy and durable
- Supports up to 2000 users and 20000 records
- High-definition binocular 1MP colour camera for accurate facial recognition
- Provides clear audio and visual signals upon acceptance
- Features relay outputs for electric lock and alarm, facilitating seamless integration with existing security systems
- Offers full access control functionality in standalone mode

Technical specifications

- IP Rating: IP5X
- Finger print capacity: 2000
- ID Card capacity: 2000
- Pin capacity: 2000
- Face recognition capacity: 2000
- Record capacity: 20000
- Display: Built in 5.0inch color display, Capacitive type
- Camera: Binocular 1MP camera
- Communication: Wiegand, TCP/IP, USB
- Access control interface: 3rd party electric lock, Door sensor, Exit button, Door bell
- Authentication: Finger / PIN / Card / Face recognition
- Power supply: DC 12V/2A
- Verification speed: ≤0.3 sec
- Operating temperature: - 20°C to +60°C
- Operating humidity: 20% ~ 90%
- Dimensions: 202 x 87 x 22mm (Lx W x D)
- Gross weight: 0.55kg

**Specifications are subject to change without notice based on technical recommendations and related product enhancements*

